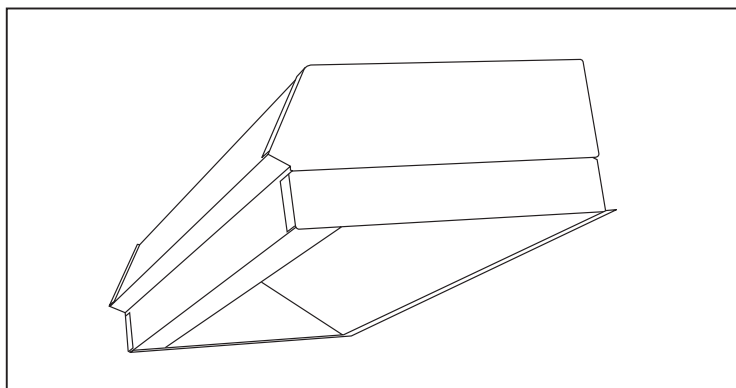


# Fluorescent Wall Wash

# FW102

## 10" x 24"

### Twin Tube Compact Fluorescent Fluorescent Wall Wash



Type: \_\_\_\_\_

Job Description: \_\_\_\_\_

#### Description

The Fluorescent Wall Wash optimizes lamp output effectiveness by directing the majority of light output to the vertical surface where it is needed. The Fluorescent Wall Wash is an ideal luminaire for wall washing and display lighting. When mounted at the ends and sides of parabolic rows, the Fluorescent Wall Wash minimizes dark wall scalloping, commonly known as the "Cave Effect."

#### Construction

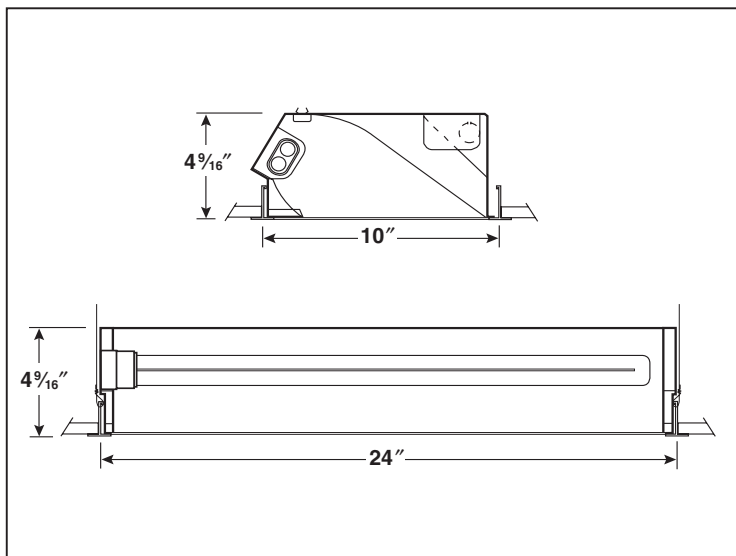
The luminaire housing is constructed of die formed code gauge cold rolled steel. The reflector assembly is constructed of anodized aluminum and is designed to present a clean uninterrupted reflecting surface. Ballast is housed above front reflector and is totally accessible from below. The optical system need not be removed for lamp maintenance.

#### Finish

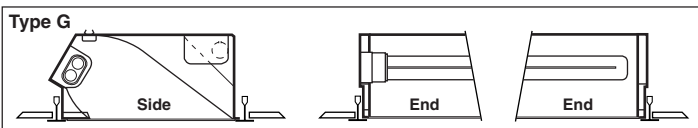
Painted parts are treated with a five-stage phosphate bonding process and finished with a high temperature baked enamel. The reflector assembly is constructed of matte anodized low iridescent aluminum (MA).

#### Ceiling Compatibility

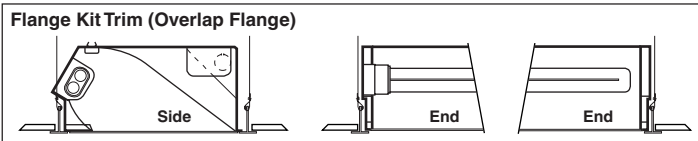
The Fluorescent Wall Wash is available to fit most ceiling systems such as NEMA type G (lay-in) and overlapping flange. For overlapping flange applications, a type G fixture must be ordered along with a flange kit (FWFK2) for the fixture to sit in. The flange kit is assembled in the field and is wired directly into the ceiling structure. The flange kit should be installed before the fixture is installed. For overlapping flange fixtures in row configurations contact your local Columbia representative. The G unit fits into a standard grid ceiling.



#### Ceiling Compatibility



For lay-in installation in exposed grid ceilings, maximum tee widths of 1" and maximum tee heights of 2" allowed.



For hard ceiling applications fixtures are provided with a flange kit that wires directly into the concealed ceiling opening for a clean finished appearance. For flange fixtures in row configurations contact your local Columbia representative.

**Flange kit cut out dimensions for single unit only:**  
**FWFK2 - 10<sup>3</sup>/<sub>8</sub>" x 24<sup>3</sup>/<sub>8</sub>"**

Complete ordering information on back. Dimensions and specifications subject to change without notice.

#### Installation

For fast wiring connections without the necessity of opening fixture or wireway, an adapter plate is furnished with each unit.

#### Labels & Electrical

All units bear appropriate UL labels and are completely wired with standard Class "P" ballasts.



PO Box 2787 (99220) 3808 North Sullivan Road Spokane WA 99216 Tel 509 924 7000

Environmental Laboratories

Photometric Report

CONTACT FACTORY

Vertical Footcandles

CONTACT FACTORY

Energy Data

CONTACT FACTORY

Ordering Information

**Model**

FW - Fluorescent  
Wall Wash

**Fixture Size**

102 - 10" x 2'  
104 - 10" x 4'

**No. of Lamps**

1 - (1) Lamp (In Cross Section)

**Lamp Type**

40TT - 40W Twin Tube Compact Fluorescent, 2G11 Base  
50TT - 50W Twin Tube Compact Fluorescent, 2G11 Base  
55TT - 55W Twin Tube Compact Fluorescent, 2G11 Base

**Ceiling Type**

G - Grid  
SM - Surface Mount  
For hard ceiling use  
flange kit.

**Ballast**

TT - Magnetic 40W Twin Tube  
Compact Fluorescent  
EBTT - Electronic Twin Tube 40W, 50W  
or 55W  
For a specific ballast vendor, show as option.

**Voltage**

120 - 120V  
277 - 277V

**Options**

FWFK2 - Flange Kit,  
2' Single Unit  
FWFK4 - Flange Kit,  
4' Single Unit  
GLR - Fast Blow Fuse  
GMF - Slow Blow Fuse  
MS9 - Master/Satellite  
Pair with 9' Harness  
MSEE - Master/Satellite  
End-To-End

