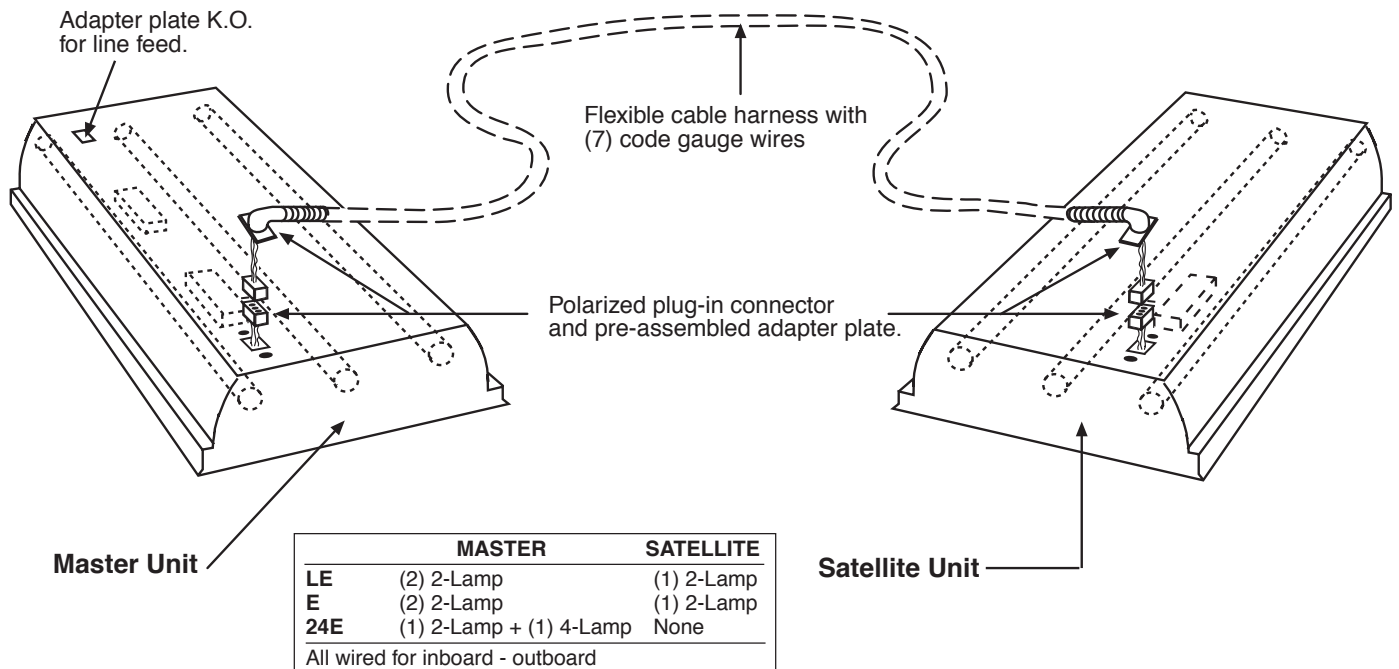


# Columbia Master-Satellite Wiring Harness

## Detail for 2'x4' 3-Lamp Luminaires

Harness may be bulk packed and shipped separate or attached to master. Consult factory for details.



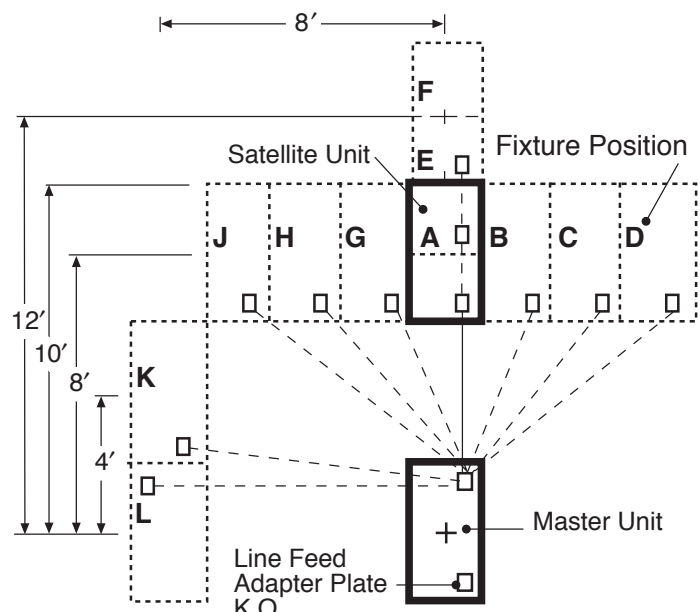
- Master/Satellite Units and Tandem Harness bear appropriate UL labels.
- Single units must be ordered to fill odd number layouts.
- Harness may be ordered with any Columbia 3-lamp luminaires.

## Layout Options

Position	Minimum Length Harness Req'd
A	6'
B	7'
C	8'
D	9'
E	8'
F	10'
G	7'
H	7'
J	8'
K	9'
L	9'

Harness length must be specified on order.

**Caution:** Some electronic ballasts can only be wired with harnesses less than 11'. Consult with ballast manufacturer before specifying.



## Ordering Information (example for position L)

- 4524-332G-LD36-S-24EB8120-MS9