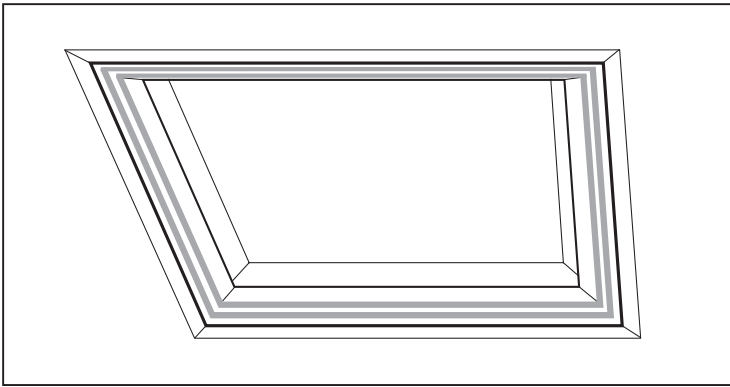


AC

Architectural Cove Indirect Recessed Luminaire

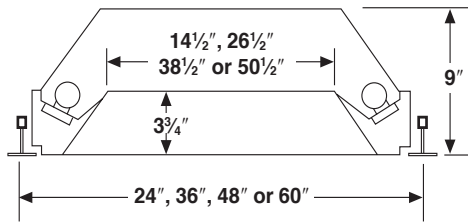
Type: _____

Job Description: _____

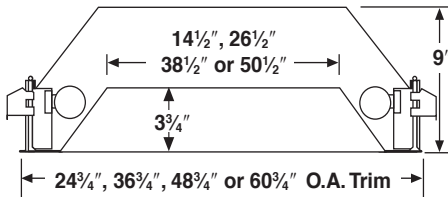


Dimensional Information

Type "G"



Type "F"



Features

- Recessed indirect coffer provides the appearance of a handcrafted cove at a fraction of the cost.
- Customized appearance available with optional trim colors.
- Dimming capability for T8 and T5 lamp units.
- Aesthetic variety provided by wood, brass, or painted steel trim.
- Available for installation in lay-in, sheet rock, or plaster ceilings.
- UL 1570 and 1598.
- Damp label available.

Description

Luminaire is designed as a sculptural coffer using indirect fluorescent lighting to provide a custom built appearance in a standard suspended ceiling. All light is reflected off a textured almond white interior surface for effective and comfortable indirect illumination.

Construction

Recessed 9" deep housing is formed of code gauge steel and welded in a one-piece assembly for installation in a 4' x 4' ceiling system. Exposed chamfered "skirt" assembly shields electrical system with concealed lamp source. "Skirt" assembly is of one-piece welded steel construction and held in place by positive drawn heavy duty torsion springs on type "F" version.

Installation

Architectural Cove units are designed for quick installation in 4' x 4' ceiling systems. Final wiring and inspection will ordinarily require access from an adjacent ceiling module or through internal electrical wireway.

Finish

Finish of interior coffer is a textured baked enamel surface. Color is a neutral cream that efficiently reflects fluorescent source output and provides a warm ambient illumination for most room color schemes. Standard finish of exposed "skirt" is baked, powder coat, matte white enamel. A variety of applied trim options to integrate with interior furnishings and designs are available upon request. For custom colors and trims, consult your Columbia representative.

Ceiling Compatibility

Fixture is designed to fit NEMA type G (lay-in) and type F (overlapping flange) ceiling systems. Luminaires for type F ceilings are provided with necessary adjustable wing hangers for leveling and support of unit.

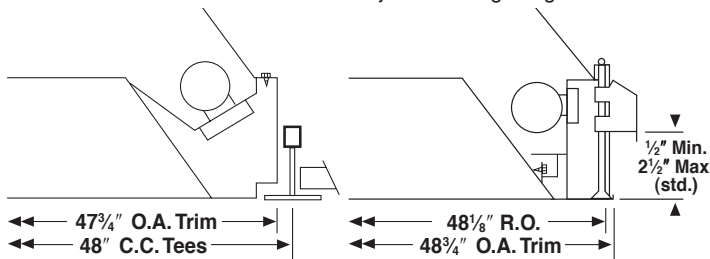
Labels & Electrical

All fixtures bear UL recessed fixture label. Fixtures are designed for use with four lamps. Dimming systems are subject to ballast compatibility and must be quoted. (CSA approval available. Use suffix ("CSA").

Standard Ceiling Compatibility

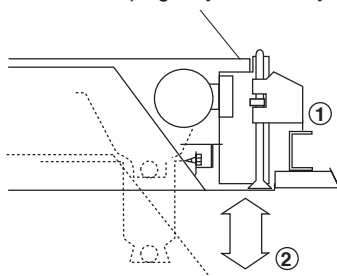
Type G NEMA Type G luminaire for lay-in installation in inverted exposed grid tee ceilings. Maximum tee width is 1".

Type F NEMA Type F luminaire has exposed flanges which finish edges of ceiling opening. Concealed suspension by adjustable wing hangers.



Flange Detail

The flanged AC is installed by drawing the upper housing (1) into the ceiling by vertically adjustable wing hangers. The lower decorative skirt assembly (2) is then attached and drawn tight against the finished ceiling without the use of tools. Relamping may be done by reaching over the skirt assembly.



LUMINAIRE: AC44-4T8G-OCT

4 X 4 4-LAMP INDIRECT LIGHTING MODULE
BAL.: (2) 731-L-T-C-P: LAMPS: F25T8; B.F.: .95; WATTS: 113
LAMPS RATED AT 2150 LUMENS EACH
LUMINOUS AREA: 44.5 X 44.5

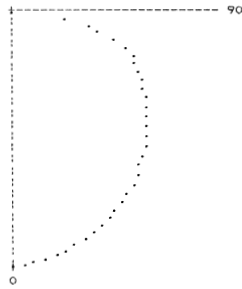
REFLECTANCE: BE .75

MOUNTING: RECESSED

S/MH: PARL 1.31 NORM 1.31

PLOT OF NORMAL PLANE
SHIELDING: PARL 90 NORM 90

DEG	C A N D L E P O W E R				
0	22.5	45	67.5	90	
0	1010.	1010.	1010.	1010.	1010.
5	1005.	998.	995.	995.	996.
10	986.	977.	971.	975.	979.
15	962.	951.	945.	950.	956.
20	938.	921.	915.	922.	931.
25	910.	891.	885.	890.	903.
30	876.	857.	850.	857.	871.
35	839.	820.	815.	821.	837.
40	798.	781.	776.	782.	797.
45	747.	735.	734.	737.	751.
50	697.	683.	688.	688.	701.
55	648.	635.	634.	639.	653.
60	599.	587.	578.	592.	605.
65	553.	539.	526.	546.	558.
70	500.	485.	467.	494.	507.
75	416.	407.	380.	416.	421.
80	292.	268.	248.	281.	295.
85	24.	44.	40.	40.	32.
90	0.	0.	0.	0.	0.



ZONAL SUMMARY

ZONE	LUMENS	LAMP	FIXT
0-30	776.	9.0	22.3
0-40	1292.	15.0	37.1
0-60	2435.	28.3	70.0
0-90	3481.	40.5	100.0
90-180	0.	0.0	0.0
0-180	3481.	40.5	100.0

This photometric test was performed using a specific ballast / lamp combination. Extrapolation of these data for other ballast / lamp combinations may produce erroneous results. The ballast factor must be applied to the lumen output rating assigned to the lamp(s) or to the candlepower values shown. Luminaire efficacy rating (LER) per NEMA LE5-1993.

LER = 29

TESTED BY: S.T. APPROVED BY: DR

TEST RUN IN ACCORDANCE TO CURRENT I.E.S. PUBLISHED PROCEDURES

Photometric Report No. 12570

Energy Data

LER: 29
Input Watts: 113

Energy Cost: \$8.28*
BF: .95

The above energy calculations were conducted using a specific lamp/ballast combination. Actual results may vary depending upon the lamp and ballast used. Lamp and ballast specifications are subject to change without notice.

*Comparative annual lighting energy cost per 1000 lumens based on 3000 hours and \$0.08 per KWH.

Coefficients of Utilization

Zonal Cavity Method Floor Reflectance - .20

RC RW	80				70				50			0
	70	50	30	10	70	50	30	10	50	30	10	0
1	44	42	40	38	43	41	39	38	39	38	36	34
2	39	36	33	30	38	35	32	30	34	31	29	27
3	36	31	28	25	35	31	27	25	29	27	24	23
4	33	28	24	21	32	27	24	21	26	23	21	19
5	30	24	20	17	29	24	20	17	23	20	17	16
6	27	21	18	15	26	21	17	15	20	17	15	14
7	25	19	15	13	24	19	15	13	18	15	13	12
8	23	17	14	11	22	17	13	11	16	13	11	10
9	21	15	12	9	21	15	12	9	15	12	9	8
10	20	14	11	8	19	14	10	8	13	10	8	7

Visual Comfort Probability

Reflectance - 80, 50, 20
Work Plane Illumination - 100 FC@ 2.5 ft.

VCP

Room Room	W L	Ht.	Luminaires Lengthwise				Luminaires Crosswise				
			8.5	10.0	13.0	16.0	Ht.	8.5	10.0	13.0	16.0
20 20			69	79	90	97		69	78	90	97
20 40			60	64	71	80		59	63	71	80
30 30			63	69	77	87		62	68	77	87
30 60			61	62	63	70		61	61	63	69
40 40			62	64	69	77		61	64	69	77
40 60			63	62	63	69		62	62	62	68
60 30			66	70	77	85		66	70	76	85
60 40			64	65	69	76		63	65	68	76
60 60			64	63	62	68		64	62	62	68

Example: AC44-425G-4EU-MW

Ordering Information

Model

AC - Architectural
Cove

Size

22 - 2'x2'
33 - 3'x3'
44 - 4'x4'
55 - 5'x5'

Number of Lamps

4 - Four

Lamp Type

36 - 16.5", 36 Watt,
TT, (2x2)
17 - 2', 17 Watt,
T8, (3x3)
20 - 2', 20 Watt,
T12, (3x3)
25 - 3', 205 Watt,
T8, (4x4)
30 - 3', 30 Watt,
T12, (4x4)
32 - 4', 32 Watt,
T8, (5x5)
40 - 4', 40 Watt,
T12, (5x5)

Ceiling Compatibility

G - Grid Trim (For
1" inverted T-bar)
F - Overlap Flange
Trim (For hard
ceilings)

Voltage

120 - 120V
277 - 277V
347 - 347V
U - 120V-277V

Skirt Color

MW - Matte White (Std.)
Brass - Preplated Brass

Ballast Type

E - Electronic T8, Instant Start
4E - 4-Lamp Electronic T8,
Instant Start
ETT - Electronic Twin Tube,
Instant Start, (Specify voltage)
ED - Dimming Electronic T8
Contact your Columbia Lighting
representative for availability.

Custom Trim (Optional)

DZIG - Deco Ziggurat*
(Specify alternate
step color)
CZIG - Classical Ziggurat
(Specify alternate
step color)
WOOD - Specify
Ziggurat trim for grid ceilings
only.

Options

EFH - Extended Flange Hanger
(Minimum 2 1/2", maximum
4" depth adjustment)
DL - Damp Label
GLR - Fast Blow Fuse
GMF - Slow Blow Fuse
CSA - UL listed or CSA certified
for Canada