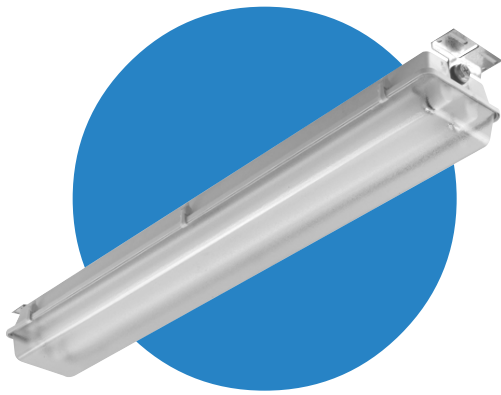


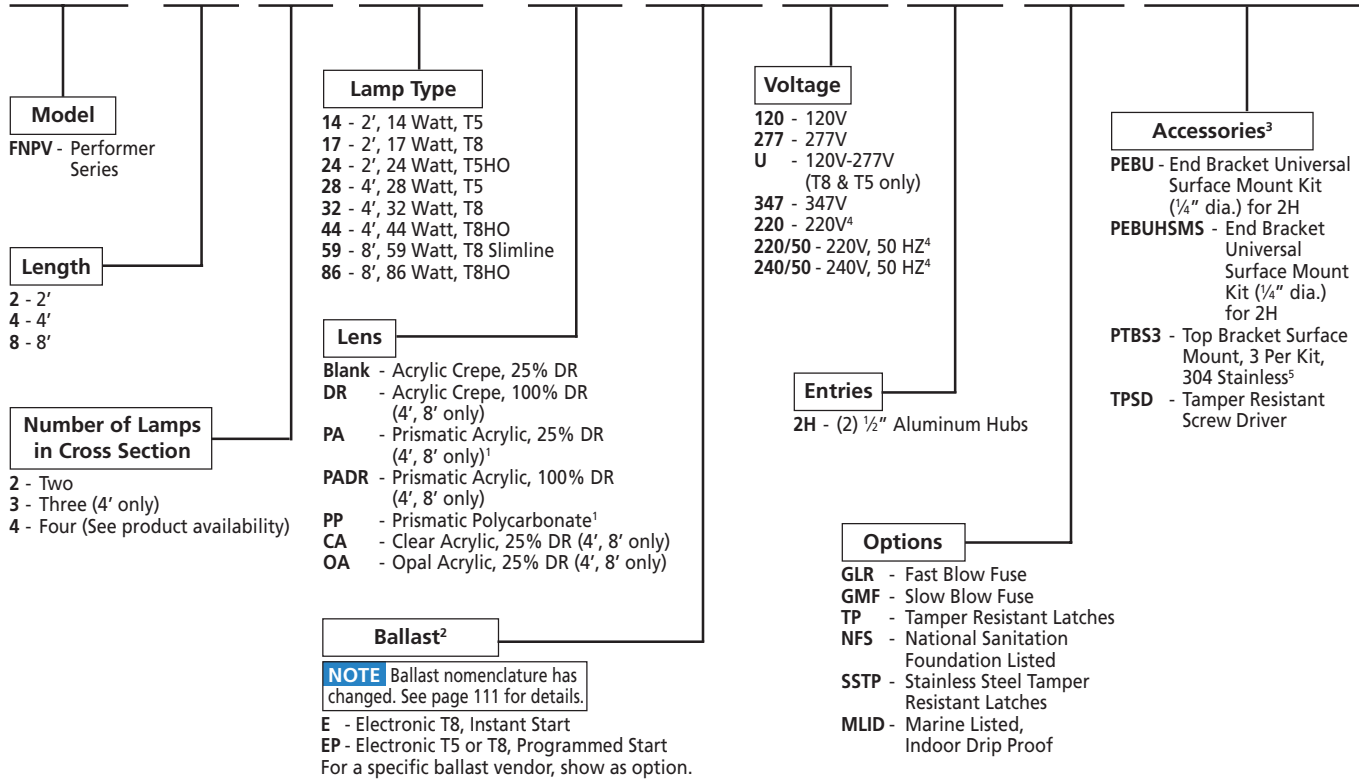
Features



- Wet location certified for ceiling and wall mount
- Nylon or stainless steel latches available with tamper resistant screws
- For use in wet locations where moisture and washdown are prevalent
- 25°C ambient listed
- For use in outdoor, hosedown, and corrosive location, and high ambient conditions
- NSF listed
- Accessible drop-down ballast tray
- UL1598 wet location listed
- Listed as electrical enclosure for thru-branch wiring
- Conduit hubs available in die-cast aluminum or 316 stainless steel
- Mounting accessories in stainless or galvanized steel
- NEC/CEC-compliant ballast disconnect standard for appropriate models – see page 111

Ordering Information Example: FNPV4-428-EPU-2H

FNPV



¹Wet location ceiling mount only (no IP65).

²Ballasts may not be available in all combinations of lamp/voltage/starting temp/THD shown above.

³20 MM entries not CSA or ABS certified.

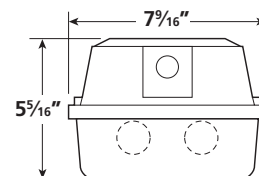
⁴Fusing not available.

⁵Recommend use of PTBS & PTBA accessories with stainless steel hubs.

Product Availability

| Size | Lamps in Cross Section | Lamps in Fixture | Lamp Type | Width | Length | Height |
|------|------------------------|------------------|------------|---------|-----------|---------|
| 2' | 2 | 2 | 14, 17, 24 | 6 5/8" | 25 15/16" | 5" |
| 4' | 2 | 2 | 28, 32, 44 | 7 1/16" | 49 13/16" | 5 5/16" |
| 8' | 2 | 2 | 59, 86 | 7 1/16" | 97 13/16" | 5 3/8" |
| | 2 | 4 | 32 | 7 1/16" | 97 13/16" | 5 3/8" |

Cross Sections



FNPV4